

Hours of Operation

Weekdays

Trains run at all hours, except the Yellow line, where they do not operate between 02:00 and 04:00.

Trains run every 10 minutes during peak hours (approximately 07:00-10:00 and 16:00-19:00), and every 20 minutes at other hours.

Weekends

Trains run every 20 minutes, except from 02:00 to 04:00 on the Red and Orange. The Yellow line runs every 30 minutes, except from 00:00 until 06:00 on Sunday.

Discounts

Kids ride free to the parks!

Thanks to a generous donation from the Civic Boosters Forum and Brassy Park Business Association, kids under 12 ride free to and from the Park station on weekends!

Senior and Disability Discount

Seniors over the age of 65 or persons with legally recognized disabilities receive 50% fares.

Information Booths

All stations in the city center include Information Booths staffed by volunteers. The hours of operation and services offered vary, but you can always find schedules, brochures and maps of local attractions.

Tickets and Passes

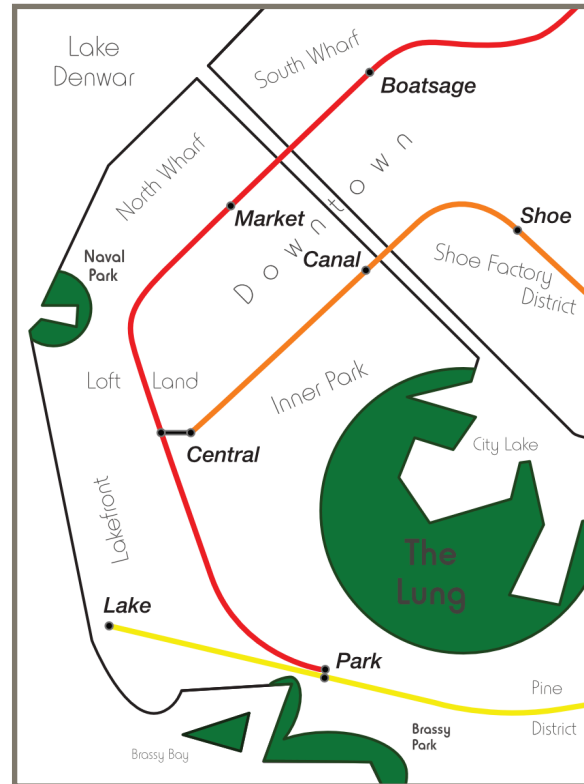
Local Tickets

Local Tickets are available for your credstick at any station, as well as many retail outlets. They are good for all travel on the system for 2 hours from time of activation.

Freedom Pass

Freedom Passes let you wave your credstick for unlimited transit on the subway, as well as regional trains, city buses, and ferries, for the day.

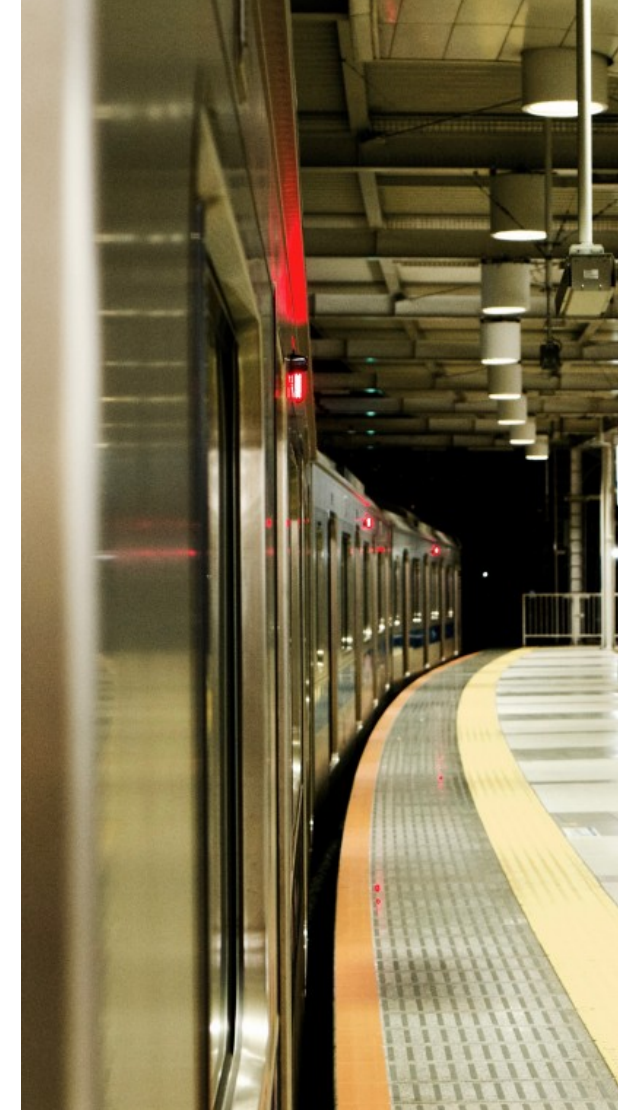
Area Map



Please refer to the official Sangulakti City Transit Authority System Map for complete system details.

Sangulakti City Center Subways

A Visitor's Guide



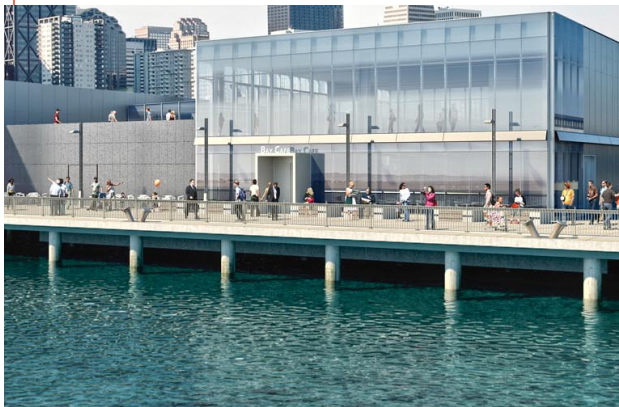
The Red Line

● **Park Station** Exit here to visit The Lung and Brassy Park, the city's most well known parks, and home to a number of museums and attractions, including the Sangi History Museum, the Boardwalks and the Municipal Ball Fields.

● **Central Station** Use this station to connect to regional and international trains and buses at the city's ground transit hub. Buy a Freedom Pass to transfer between all forms of transit with one ticket.

● **Market Station** Directly beneath the city's world renowned Denwar Seafood Market, this station provides access to the North Wharf and Market Districts, home to the cities unparalleled retail options, top bars and 5-star eateries. When you get off at this station, better bring your credstick!

● **Boatsage Station** This station serves the South Wharf and South Downtown districts. In the days when the wharf was an active fishing harbor, the Boatsage was a private club for lake captains of particular experience or renown. This station sits below the original club, now the Hotel Boatsage.



The Orange Line

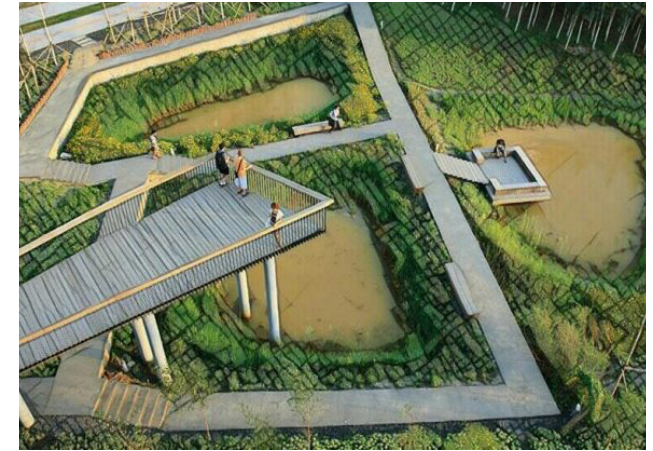
● **Central Station** In addition to being a transit hub, Central station serves the Low Tower and Inner Park neighborhoods. Sometimes called “the heart of the city” (a pun on their proximity to The Lung Park) these neighborhoods are what you most often see depicted in movies set in the city.

● **Canal Station** Serving the North Downtown area, and providing access to the north bank of the Urban Canal, this station is part of the Canal Research Zone, a complex that is home to many notable firms, alongside growing technology start-ups.

● **Shoe Station** This station is right in the heart of the Shoe Factory district, home to the city's world renowned shoe industry. Each day this station sees more commuters than any other station as workers head to and from the studios and factories clustered nearby.

The Lung Park

The Lung is a unique urban park. Built on the wetlands of City Lake, the park supports a significant migratory bird population. In summer, the lake is home to rare indigo flamingos; in winter, flocks of ducks nest among the reedlands. The park is also known for its miles of multi-level boardwalks, offering unique views and connecting the park's two museums (Sangi History and Fine Arts) with the Municipal Ball Fields.



The Yellow Line

● **Lake Station** This station serves the Lakefront and Loft Land residential districts, home to the rich and famous. Pick up a map at the Information Booth in the station for a walking tour of historical residences and current celeb homes.

● **Park Station** At the entrance to the central tunnels, this station is situated between The Lung and Brassy Parks, with a view of the Park Islands. The station's entrance canopy features stained glass in the local tradition. Combined with the lush setting, it makes this, perhaps, the most beautiful transit station in the world.